

DESIGN & DETAIL

IW



NEW PROJECT
CELEBRITY OF IW _ Mathieu Lehanneur

SPA & AQUA CENTER vol.

102

IW _Interior World

Vol.102

Publisher Jeong Kwang-young

Editor Choi Ji-hyun, Ha Ji-hae, Yoon Jin-joo

Designer

Cho Jae-hyun, Cho Eun-young

Photographer Lee Joong-hoon, Kim Myeong-sik

Publishing ARCHIWORLD Co., Ltd.

5F Archiworld Bldg., 256 Neungdong-ro,

Gwangjin-gu, Seoul, Korea

TEL: +82-2-422-7392

FAX: +82-2-422-7396

www.archiworld-pa.com

E-mail: iweditor@paran.com

Price US \$40

발행인 정광영

취재기자 과장 최지현

대리 하지혜

윤진주

편집디자인 차장 조재현

조은영

사진기자 차장 이종훈, 차장 김영석

광고 기획부 부장 김동래, 차장 김주찬, 정성일

총무 관리부 과장 정은숙, 김지현

이사 김병환

상무 고세환

발행처 건축세계(주)

서울시 광진구 능동로 256 건축세계빌딩 5층

TEL: 02-422-7392 FAX: 02-422-7396

www.archiworld-pa.com

이메일 iweditor@paran.com

등록번호 공전. 라00062

청가 33,000원 (1년 구독 28만원)

© 건축세계(주), ARCHIWORLD Co., Ltd. 2011

Printed in Korea



NEW PROJECT >> 신작

Park Seung Chul Hair—Studio 박승철 헤어스튜디오	4
25hours Hotel Vienna 25시 호텔 빈 지점	12
Palace ifc lifestyle cinema's Lounge	
텔리스 ifc 라이프스타일 영화관 라운지	18
Saimdang 사임당	26
LAHI Restaurant 라히 레스토랑	32

CELEBRITY OF IW >> IW 셀러브리티

Studio 13/16 스튜디오 13/16	46
JWT Agency JWT 광고 대행사	52
LaboBrain & LaboShop 라보브레인 & 라보숍	60
St. Hilaire Church 생 일레르 교회, 옐르	68

CONTENTS

SPA & AQUA CENTER >> 스파 앤 아쿠아 센터 공간

Incontro 인콘트로	76
Wellness & Spa Lone 웰니스 & 스파 론	84
Singapore Mandarin Oriental Spa	
싱가포르 만다린 오리엔탈 호텔 스파	90
Aura Spa 오려 스파	98
Station BLU 스테이션 블루	106
Socie / Guerlain Total Beauty & SPA	
소시에 / 걸랑 토탈 뷰티 스파	112
C.N.I Syrdall Schwimm Recreational Baths	
C.N.I. 시르달 슈뎀 휴게 수영장	120
Club Natació Catalunya 클럽 나타시오 카탈루냐	130
London Aquatics Center 런던 아쿠아틱 센터	138
Jean-Claude Malépart Sport Center 장 클로드 스포츠 센터	148
(Zoom-in) Banyan Tree Club & Spa	
반얀 트리 클럽 & 스파	158

THE OBJET >> 디 오브제

Giselle lounge Table 지젤 라운지 탁자	176
COMEQUANDOFUORIPIOVE 코메판도푸오리피오베	178
Sixties Lamp 식스티즈 전등	180
Accordion Cabinet 아코디언 캐비닛	182
Eyrie Chair 응지 의자	184

DESIGN VIEW >> 디자인 뷰

2011 KIA Convention & Exhibition 2011 대한민국건축문화제	186
---	-----

»» SPA : AQUA CENTER : ZOOM-IN

Club Natació Catalunya

Design: AIA salazarriavarro (www.aia.cat) · Design Team: Joan Carles Navarro, Teresa Junyent,
Id arquitectes tècnics · Location: C/Ramiro de Maeztu 25, Barcelona, Spain · Built Area: 7,715m²
Construction: Dragados S.A. · Photographs: Ariel Ramirez · Editor: Ha Ji-hae

설계: AIA 사라자나바로 · 위치: 스페인 바르셀로나 · 면적: 7,715m² · 에디터: 하지혜







Swimming pool



Viewed from the swimming pool



Pool

Following a number of stages and different emplacements of the historic Club Natació Catalunya (CNC), at the beginning of the 70's the Barcelona City Council finally assigned the municipal sports facilities of Can Toda to the CNC. In 2006, the CNC contracted AIA to carry out the overall renovation and extension work aimed at converting the Can Toda Center into a reference in terms of sporting facilities for the city as a whole.

The initial plan for the project was structured in two phases, so that execution would be possible from a constructive point of view and also in order to guarantee an acceptable level of usage of the rest of the installations while the work was being done. However finally, and after verifying the difficulties involved, in terms of both construction and site management, given the sheer scale that the project represented, it was decided that the work would be done in a single phase.

The project design incorporated the latest technologies applicable for this kind of facility, both with regard to the treatment of the water in the swimming pools and in the thermal and the hygrothermal control of the air throughout the facilities, with the installation of a computerised control system that automatically optimises the functioning of the different systems at all times. These installations and the control thereof contributes to a minimisation of energy consumptions, adapting needs and production levels and ensuring a better utilization of natural climate control resources, along with the highly sustainable performance of the facilities as a whole. The first stage consisted of a complete renovation of the interior of the swimming pool. This was done by replacing both of the existing pool basins with two new, state-of-the-art, stainless steel and polyester, overflow type basins. This intervention required the simultaneous demolition of the old poolside areas and the construction

of new pool surrounds around the new basins, along with the building of a large underground basement area to house the equipment and installations, completely replacing the existing facilities, which were insufficient for the new requirements.

The façade of the main body of the swimming pools employs solar control windows at the bottom along with a double-skin of orange cellular polycarbonate panels that allow for the incorporation of an adequate transmission factor and, at the same time, avoid excessive heating of the interior, minimizing the energy consumption required to ensure ideal humidity and temperature conditions in the pool area as a whole. The roof design consists of a structure of large 30-meter laminated wooden beam, supporting a light sandwich type roof that, due to its composition, guarantees the required level of thermal insulation. The large scale work of building the new inside swimming pools also includes the major transformation of the part of the building currently occupied by the changing rooms, gymnasium and access to the stands, etc.

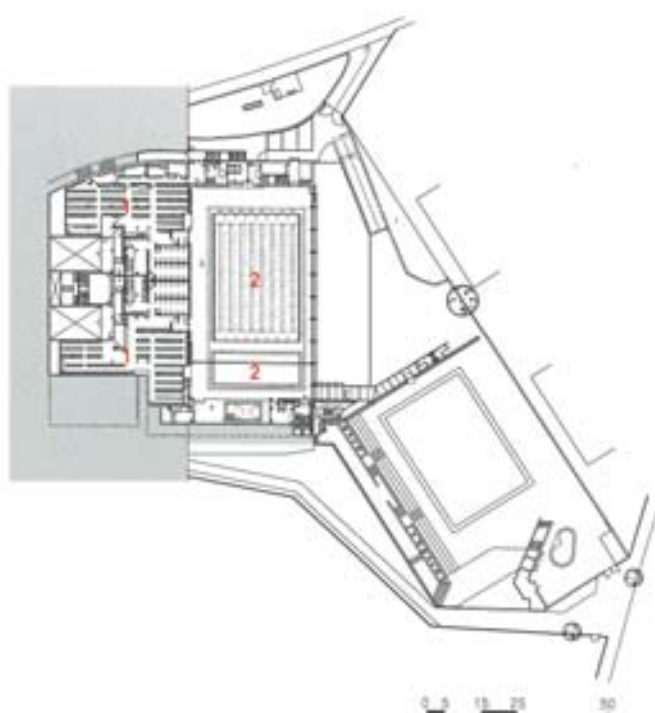
One of the main innovations at the new centre has been the creation of an important services area called the 'Wellness Center', which includes novel concepts in the field of health and wellbeing. Activities have been organised around these concepts that are becoming increasingly more popular with the public. The main challenge of this project was how to convert the results of a range of different extension phases, introduced over the years, into a 'single' building. This has been achieved by means of volumetric and spatial reorganisation and a re-standardisation aimed at ensuring that both final image and functioning can be understood as both a balancing and a finite element.



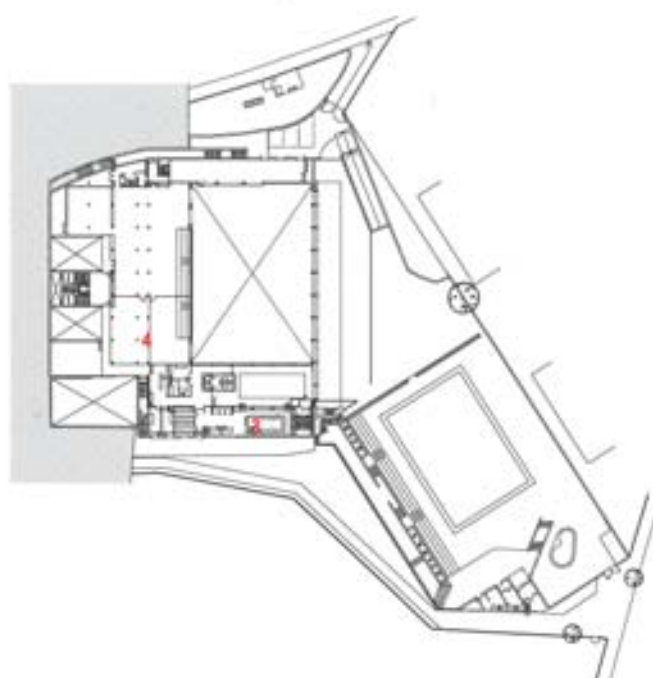
- 1. Changing room
- 2. Swimming pool
- 3. Spa
- 4. Fitness
- 5. Lounge
- 6. Service area



2nd Floor plan



1st Floor plan



1.5th Floor plan



Corridor



Lounge



Spa



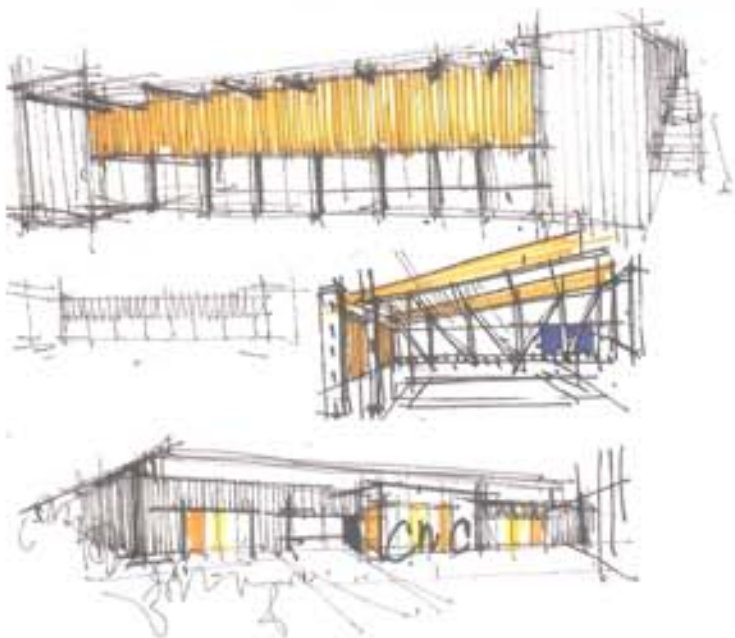
Entrance of spa



Sketch



Exterior



Sketch

클럽 나타시오 카탈루냐는 수차례의 개조를 거친 역사적인 건물로써, 최근 기존 센터를 전반적으로 개조 및 확장하여 도심에서도 스포츠를 즐길 수 있는 새로운 시설이 추가되었다. 디자이너는 이 프로젝트에서 수년간에 걸쳐 더해진 다양한 층층 공간을 어떻게 하나의 건물 속에 통합할 것인가에 대해 많은 고민을 했다. 이에 볼륨과 공간을 재조직, 재설정하여 이미지와 기능이 모두 균형을 이루는 한정된 요소처럼 보이도록 하였다.

먼저, 수영장 주요부의 파사드는 적절한 전도 매체로 통합되어 실내의 온도가 급격히 상승하는 것을 막고, 이중 유리카보네이트 판과 태양광 제어창으로 에너지 소비를 최소화했다. 이 계획으로 실내에는 이상적인 습도와 적절한 온도 조건을 갖추기에 적합한 환경이 되었다. 또한, 내부에는 전면적인 개조를 통해 기존 수영장에 스테인레스 강, 폴리에스터를 새로이 덧붙여 물이 흘러넘치는 형태의 최신식 수영장 두 개로 갖추도록 작업하였다. 이외에도 건강과 행복이라는 개념 아래 '웰니스 센터'라고 이름 붙인 주요 서비스 구역이 신축 센터에 추가되었으며, 대중적이면서도 활기찬 분위기를 위해 다채로운 색상을 중심으로 공간을 구성하였다.